



## The testo 882 Thermal Imager with a robust 320 x 240 detector



The testo 882 Thermal Imager stands out because of the **new detector with a 320 x 240 array**. It allows for even more precise infrared images.

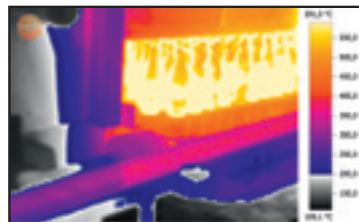
With **76,800 measurement points** you can see small temperature details of the targeted area. It makes it much easier for you to **detect anomalies and weaknesses from greater distances**.

The built-in digital camera with power LEDs simultaneously store a parallel visual image of the targeted area. **The power LEDs guarantee you optimum illumination** of dark areas when recording real images.

Testo IRSOFT software package includes our **TwinPix** feature which allows you to **overlay the thermal and visual image** to better understand the targeted conditions. Easy operation with simple icons and intuitive menus.

This thermal imager can also be **equipped to measure high temperatures up to 1022°F**.

### Prevent Failures. Increase Efficiency. Reduce Downtime.



## APPLICATIONS



Electrical Maintenance



Building Thermography



Mechanical Maintenance

## Features

- 320 x 240 array for a clear, accurate image
- Large field of view with 32° lens
- High image quality: NETD < 60mk
- Voice recording with the practical headset
- Built-in digital camera with power LEDs
- Min/Max on area calculation
- Lens protection glass
- High temperature measurement up to 1022°F
- Manual and Dynamic motor focus for sharp images and true one hand operation
- Isotherm display in instrument
- Auto hot/cold spot recognition



## The testo 882 Thermal Imager with a robust 320 x 240 detector

### Technical Data

Detector type	FPA 320 x 240 pixels, a.Si
Thermal sensitivity (NETD)	<60 mK at 86°F (30°C)
Field of view / min. focus distance	32° x 23° / 7.8" (standard lens)
Geometric resolution (IFOV)	1.7 mrad
Image refresh rate	33 Hz
Focus	manual and motor focus
Spectral range	8 to 14 µm
Optical field / min. focus distance	33° x 25° / 15.7"
Image size	640 x 480 pixels
Image display	3.5" LCD with 320 x 240 pixels
Display options	only IR / only digital image / IR and digital image
Video output	USB 2.0
Color palettes	9 options (ironbow, rainbow, cold/hot, blue/red, greyscale, inverted grey, sepia, testo, iron)
Temperature range	-4°F to 212°F (-20°C to +100°C) +32°F to +662°F (0°C to 350°C), switchable
High temperature (optional)	+662°F to +1022°F (350°C to +550°C)
Accuracy	± 2°C, ± 2% of rdg, (-4°F to +662°F) ± 3°C, ± 3% of rdg, (+662°F to +1022°F)
Minimum diameter measurement point	0.2" at 3 ft.
Setting emissivity	0.01 to 1
File format	.bmt; export options in .bmp, .jpg, .png, .csv, .xls
Data storage device	2 GB SD card (approx. 1000 images)
Battery type	Li-ion battery
Operating time	4 hours
Operating temperature range	5°F to +104°F
Storage temperature range	-22°F to +140°F
Protection class of housing	IP 54
Weight	approx. 2 lbs
Dimensions	6" x 4.2" x 10.3"
Tripod mounting	Yes with adapter
Housing	ABS
<b>PC Software</b>	
System requirements	Windows XP (Service Pack 2) Windows Vista, Windows 7, USB 2.0 interface
Warranty	2 years

### Accessories

Emissivity adhesive tape Heatproof up to 572°F	0554 0051
Two-bay battery charger	0554 8801
Spare battery	0554 8802
Tripod	0554 8804
Protective lens	0554 8805

### Ordering Information

#### 882 Thermal Imager Kit Part no. 0560 0882 70

Note: All imager kits include hard shell case, SD card, USB cable, software, power supply and tripod mounting plate.

Distributor:

**Control Analytics, Inc.**  
6017 Enterprise Drive  
Export, PA 15632  
724-387-2367  
sales@controlanalytics.com  
controlanalytics.com

**testo, Inc.**  
(800) 227-0729  
e-mail: info@testo.com  
www.testo.com/thermal